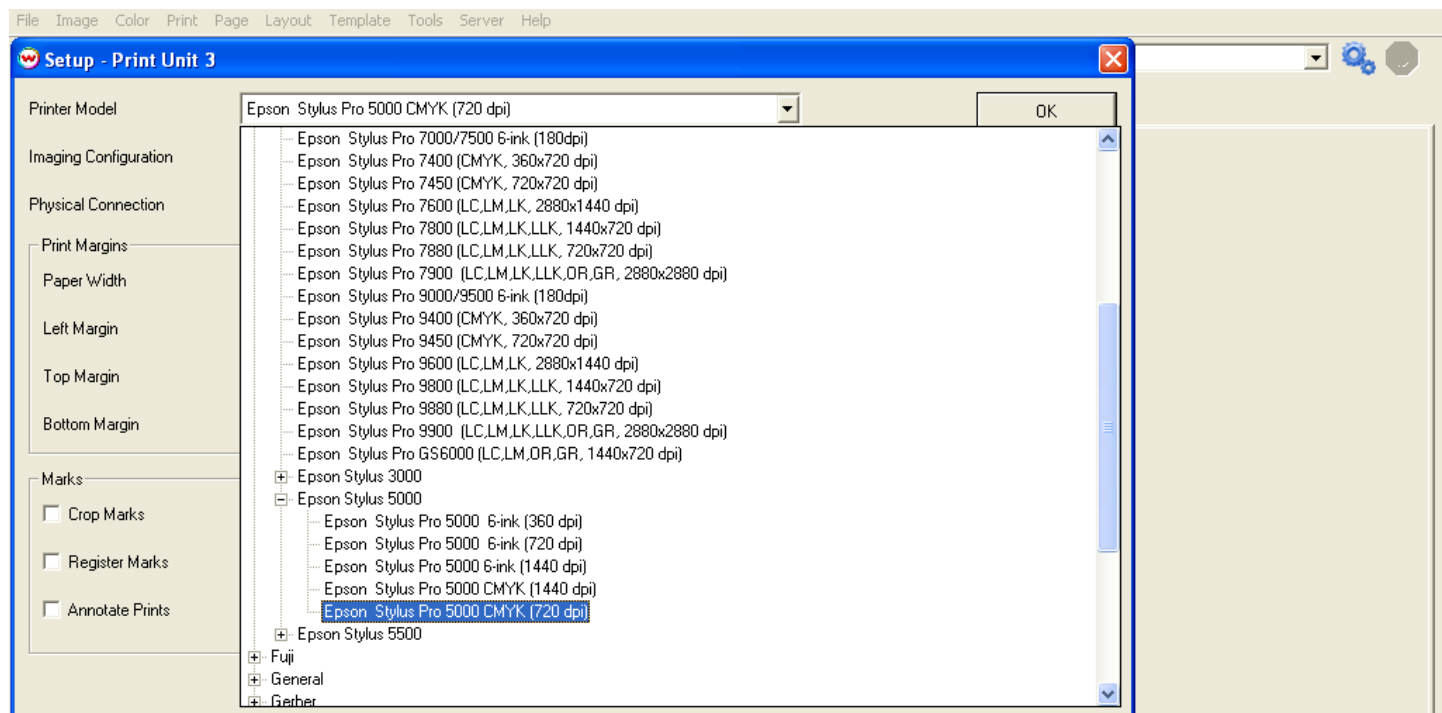


WASATCH COST ESTIMATOR WORKFLOW

STEP 1: Open Wasatch SoftRIP and choose to configure a new unit as shown below.

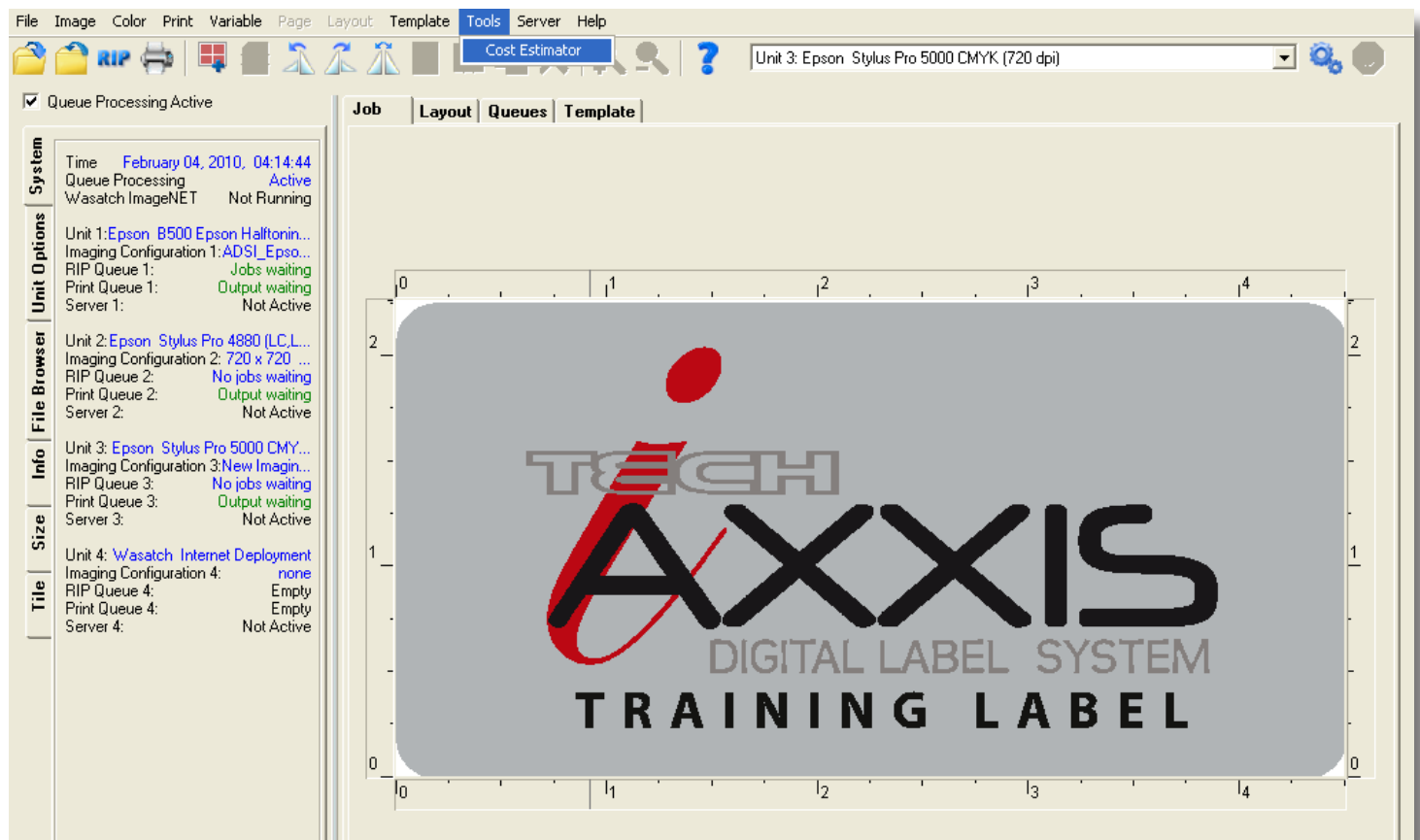


STEP 2: Go to PRINT > SETUP and choose the Epson Stylus 5000 (CMYK 720 DPI) print from the PRINTER MODEL drop down menu and press OK.



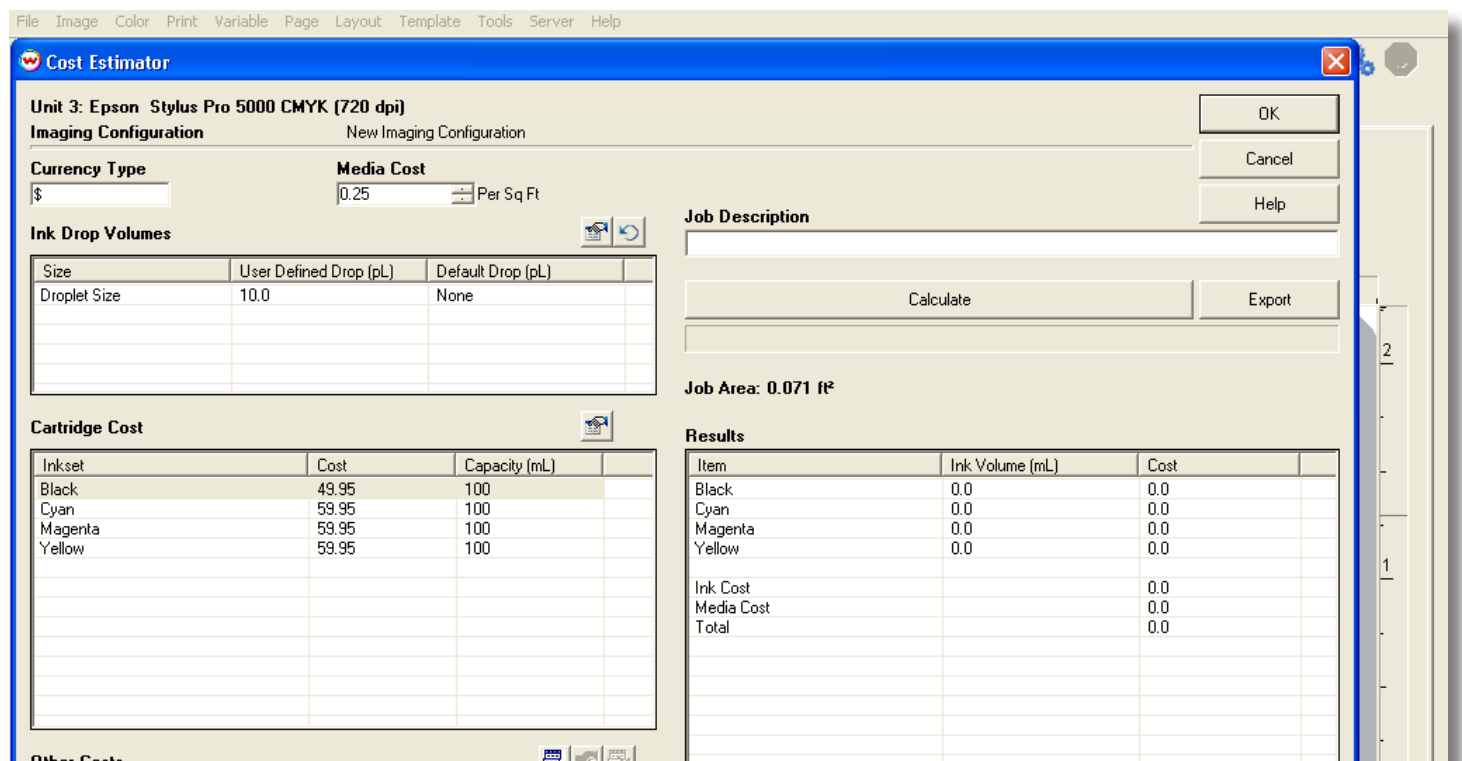
STEP 3: Open the label file you wish to estimate in Wasatch SoftRIP.

STEP 4: Go to **TOOLS > COST ESTIMATOR**



STEP 5: Double click on DROPLET SIZE and set the size to 10

STEP 6: Input your costs for MEDIA, INK and any other extra costs you may have



Step 7: Press CALCULATE and your per label cost will be displayed

[illegible]

The results should look something like this

[illegible]