

# **ALLEN DATAGRAPH**

## Technical Support Bulletin: Loading Firmware to Sheeter

Last Updated February 10, 2004

This TSB is written as a step by step instruction manual to load firmware into the Sheeter.

1. Run the setup to install firmware on hard driver. (SetupSheeterBuildxxx.exe)
2. Set Program/Run switch to Program position. (Note: on rev 0 boards this is labeled run). On field units the serial cable and program / run switch will be on the back of the Sheeter.



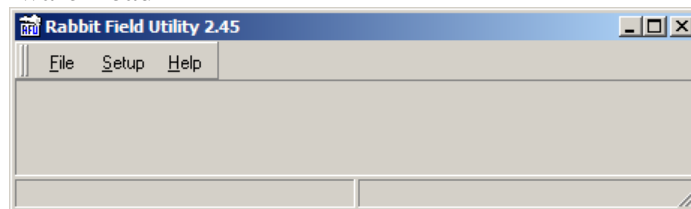
3. Connect serial cable (9-pin – 9-pin) straight through cable (Radio shack p/n 26-117). A longer cable may be purchased or two cables maybe strung end-to-end.



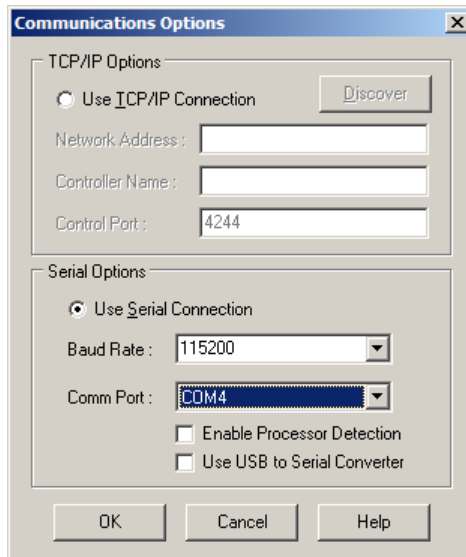
6-Ft. Serial **RS-** \$14.49  
232C **Cable**  
[Add to Cart](#)

6-ft DB9 male to DB9 female shielded **cable.**  
**Radio Shack**  
**26-117**  
[MORE](#)

4. Start the Sheeter Firmware Load Utility (Start -> All Programs -> Allen Datagraph -> Sheeter Firmware Load)



5. Click on Setup -> Communications

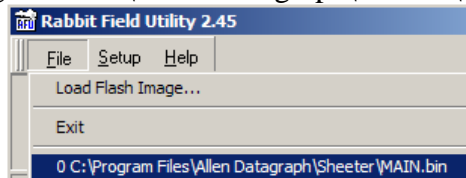


Select com port where you connected your cable.

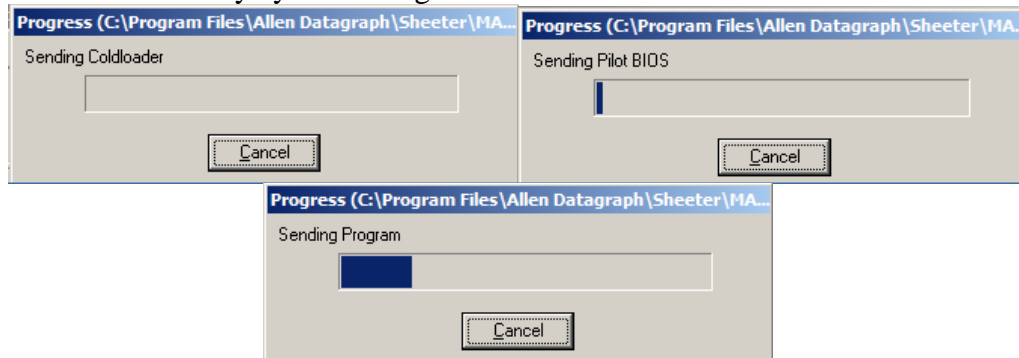
If the com port is a usb check the Use USB to Serial Convert

Click on OK

6. Select File 0 C:\Program Files\Allen Datagraph\Sheeter\Main.bin



7. Rabbit field utility cycles through:



8. Exit Utility (File -> Exit)
9. Turn off power.
10. Set Program / Run switch to Run (Note: on rev 0 board this is labeled prog)
11. Wait 15 seconds and then power on. New firmware should now be loaded. You can check to see if firmware is loaded by pressing enter, rotate until "Bld" is displayed and press enter again. The build number displayed should match the build number you loaded.