

USER'S MANUAL

USB TO Serial Adapter

1. Introduction

Congratulations on your purchase of the USB-Serial adapter. This device provides a simple and easy way to connect Universal Serial Bus (USB) and Serial port interface.

With the advantage of USB port, users have the capability to utilize the peripheral with serial port interface in an easy to use environment such as plug and play & hot swap function. This adapter is designed for ideal connections to Cellular Phone, Digital Camera, Modems or ISDN terminal adapter with over 120k bps data transfer rate.

The USB-Serial adapter and software drivers are capable of providing a no-firmware-change feature that enable USB interface to be transparent to serial port peripherals with minimum modifications.

2. Package Content

- Hardware: USB-Serial adapter, USB type A to type B cable
- Software: USB-Serial driver on CD-ROM

3. Product Features

- USB Specification Rev. 1.1 compliant
- Support the RS232 Serial interface
- Over 120k bps data transfer rate
- Support remote wake-up and power management

4. System Requirements

PC

- PC 486DX4-100 MHz or higher or compatible system
- Available USB port
- CD-ROM drive
- Windows® 98, Windows® ME, Windows® 2000 and Windows® XP

MAC

- Power G3, G4, or I-Mac
- Available USB port
- CD-ROM drive
- Mac OS 9.X or higher

5. Driver Installation

5.1 Windows® 98 Driver Installation

Following the steps below to install Windows® 98 driver

- 5.1.1 Power on your computer and make sure that the USB port is enabled and working properly.
- 5.1.2 Plug in the **USB-Serial adapter** into the USB port and run the **Add New Hardware Wizard** to assist you in setting up the new device. Click “**Next**” to continue.



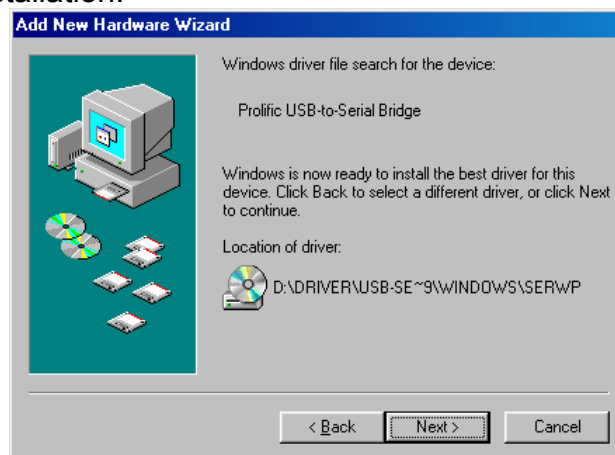
- 5.1.3 Select “**Search for the best driver for your device (Recommended)**”, then click “**Next**” to continue.



- 5.1.4 Insert the **USB-Serial adapter** software driver into the CD-ROM drive and select Specify a location and type the “**D:\DRIVER\USB-SERIAL ADAPTER\WINDOWS**” in the dialogue (D: represents CD-ROM)



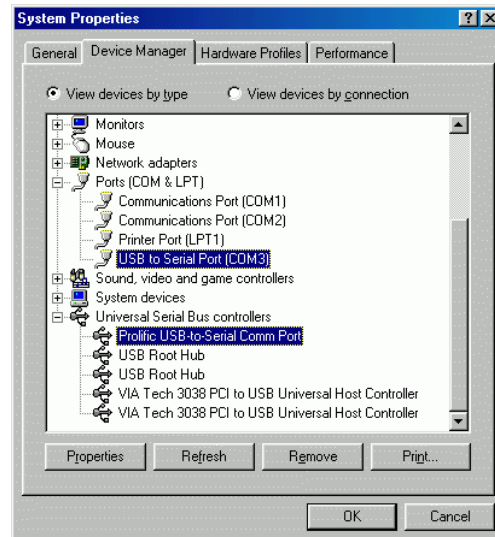
- 5.1.5 Windows® will detect the driver (**SERWPL.INF**) and shows the **Prolific USB-to-Serial Comm Port**. Click “**Next**” to continue installation.



- 5.1.6 Click Next to continue and let Windows® copy the needed files to your hard disk.



-
- 5.1.7 When Windows® finished installing the software, click **“Finish”**.
- 5.1.8 After install the driver, you have to check the **“Control Panel”-“System”-“Device Manager”** to make sure the driver has already installed, you can see a **USB to Serial Port (COM3)** under the **Ports (COM & LPT)** and a **Prolific USB-to-serial Com Port** under the **Universal Serial Bus Controller**.

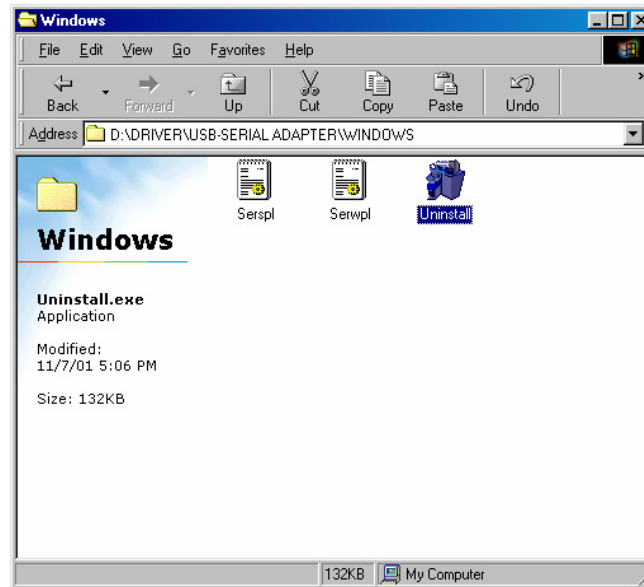


5.2 Windows® 98 Driver Un-installation

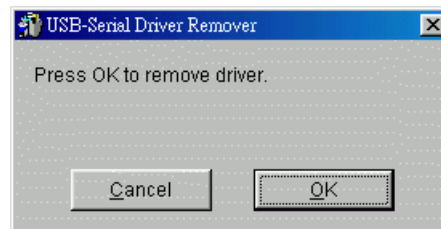
If you want to remove the USB-Serial adapter driver, you can uninstall it by following the steps below:

5.2.1 Unplug the USB-Serial adapter from your PC.

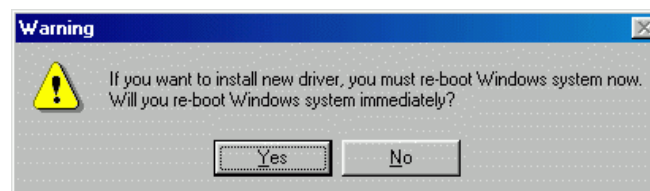
5.2.2 Run the **D:\DRIVER\USB-SERIAL ADAPTER\WINDOWS\Uninstall.exe** from the software CD-ROM.



5.2.3 Click “Ok” to continue.



5.2.4 After remove the driver, you have to reboot the PC



5.3 Windows® ME Driver Installation

Follow the steps below to install Windows® ME driver

- 5.3.1 Power on your computer and make sure that the USB port is enabled and working properly.
- 5.3.2 Insert the **USB-Serial adapter** software driver into the CD-ROM drive and Plug in the **USB-Serial adapter** into the USB port; select the **Automatic search for a better driver (recommended)**, and then click **“Next”** to continue.



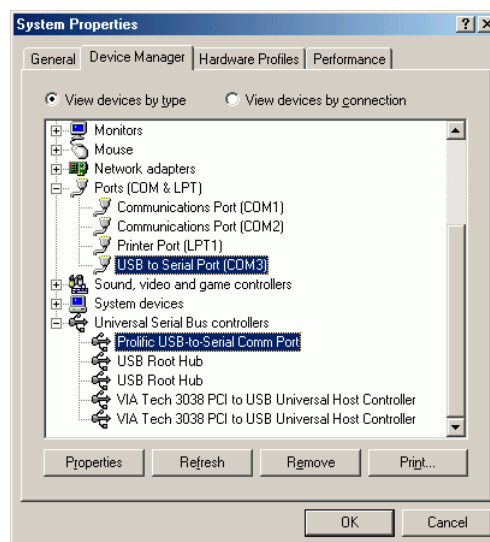
- 5.3.3 Windows® will detect the driver (**SERWPL.INF**) and show the **Prolific USB-to-Serial Comm Port**.



5.3.4 When Windows® finished installing the software, click **“Finish”**.



5.3.5 After install the driver, you have to check the **“Control Panel”-“System”-“Device Manager”** to make sure the driver has already installed, you can see a **USB to Serial Port (COM3)** under the **Ports (COM & LPT)** and a **Prolific USB-to-serial Com Port** under the **Universal Serial Bus Controller**.

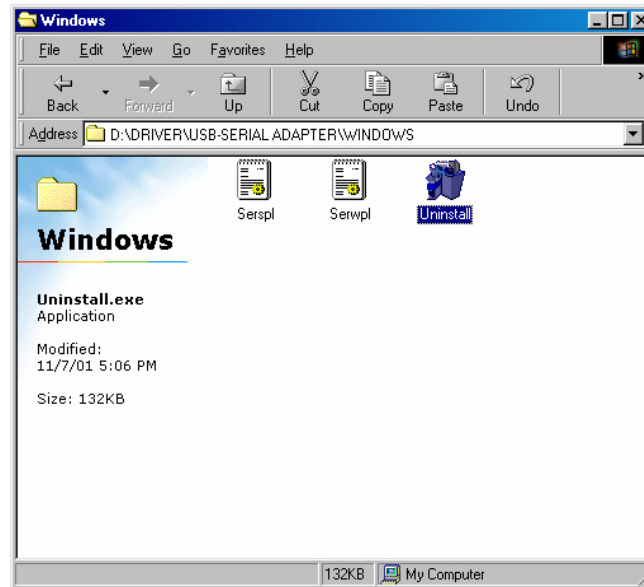


5.4 Windows® ME Driver Un-Installation

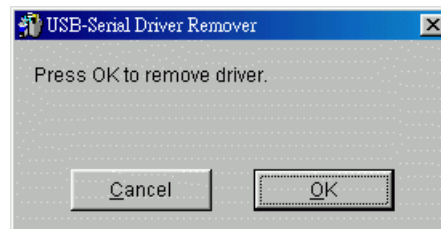
If you want to remove the USB-Serial adapter driver, you can uninstall it by following the steps below:

5.4.1 Unplug the USB-Serial adapter from your PC.

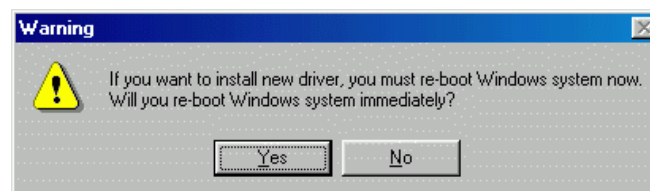
5.4.2 Run the **D:\DRIVER\USB-SERIAL ADAPTER\WINDOWS\Uninstall.exe** from the software CD-ROM.



5.4.3 Click “Ok” to continue.



5.4.4 After remove the driver, you have to reboot the PC



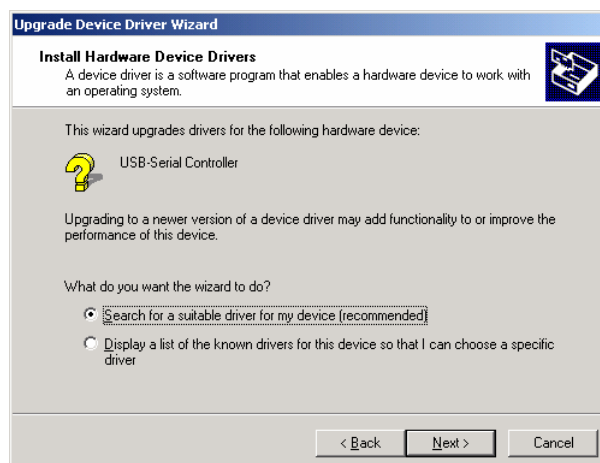
5.5 Windows® 2000 Driver Installation

Follow the steps below to install Windows® 2000 driver:

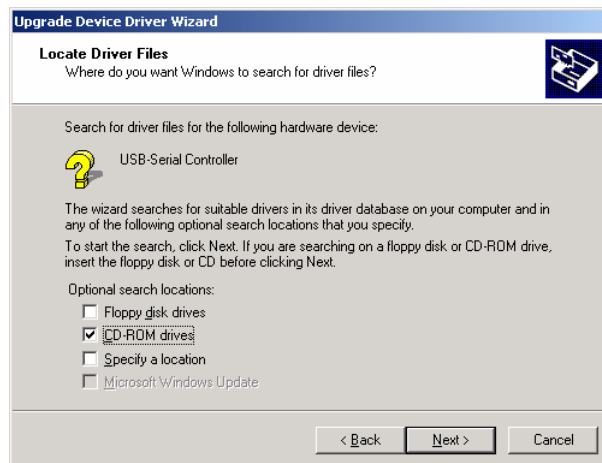
- 5.5.1 Power on your computer and make sure that the USB port is enabled and working properly.
- 5.5.2 Insert the **USB-Serial adapter** software driver into the CD-ROM drive and Plug in the USB-Serial adapter into the USB port, Windows will run the **Found New Hardware Wizard** to assist you in setting up the new device. Click **“Next”** to continue.



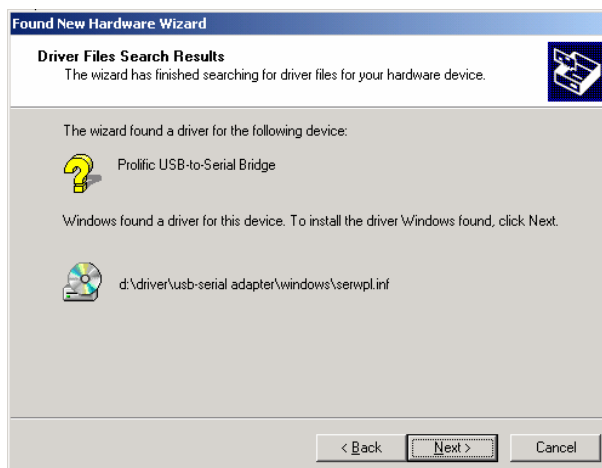
- 5.5.3 Select **Search for a suitable driver for my device (recommend)** and click **“NEXT”** to continue.



5.5.4 Select the CD-ROM drive and click “**NEXT**” to continue.



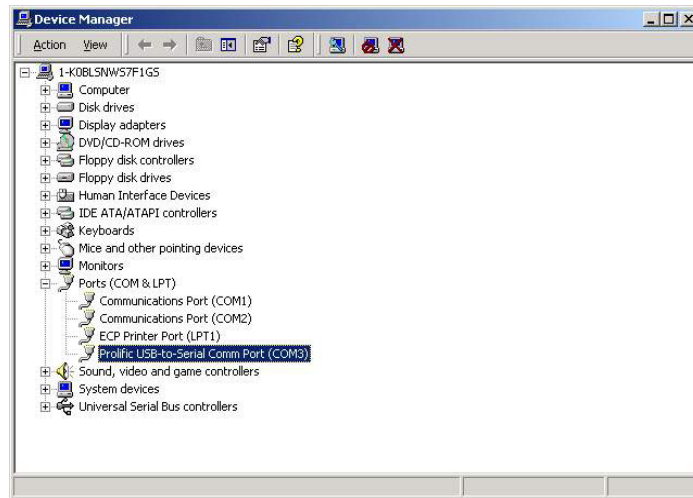
5.5.5 Windows® will detect the driver (**SERWPL.INF**) and Click “**Next**” to continue.



5.5.6 Click “**Finish**” to finish the step.



5.5.7 After the step, you have to check the **“Control Panel”-“System”-“hardware”-“Device Manager”** and you can see the **(Prolific USB to Serial Comm Port)** under the **Ports (Com & LPT)**

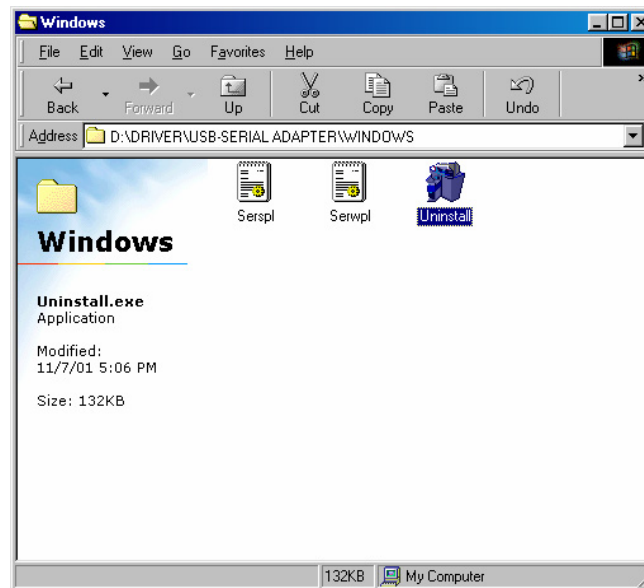


5.6 Windows® 2000 Driver Un-Installation

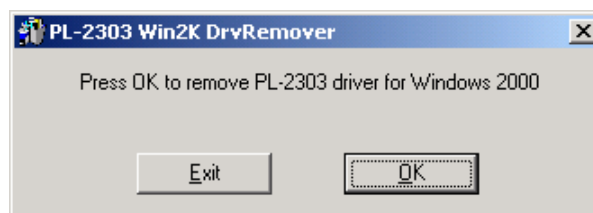
If you want to remove the USB-Serial adapter driver, you can uninstall it by following the steps below:

5.6.1 Unplug the USB-Serial adapter from your PC.

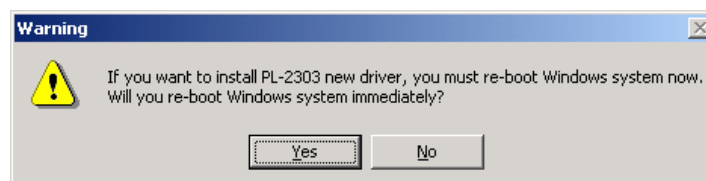
5.6.2 Run the **D:\DRIVER\USB-SERIAL ADAPTER\WINDOWS\Uninstall.exe** from the software CD-ROM.



5.6.3 Click “Ok” to continue.



5.6.4 After remove the driver, you have to reboot the PC



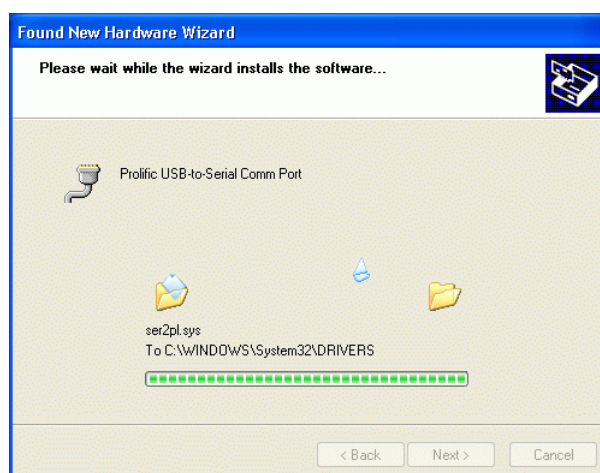
5.7 Windows® XP Driver Installation

Follow the steps below to install Windows® XP driver:

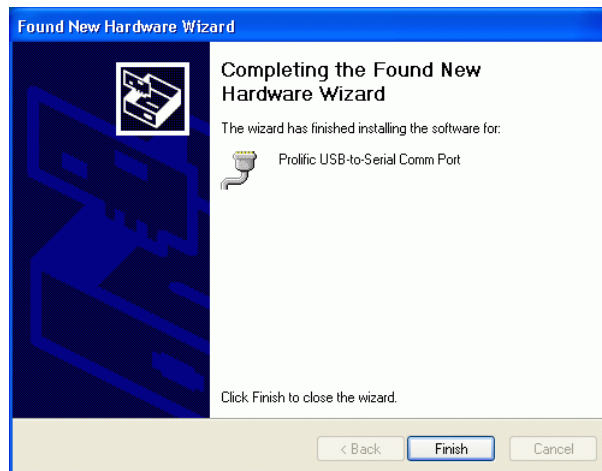
- 5.7.1 Power on your computer and make sure that the USB port is enabled and working properly.
- 5.7.2 Insert the driver of **USB-Serial adapter** into CD-ROM drive and plug in the **USB-Serial adapter** into the USB port, the “**Found New Hardware Wizard**” will to assist you to setting up the new device.
- 5.7.3 Select the “**Install the software automatically (Recommended)**” then click “**Next**” to continue.



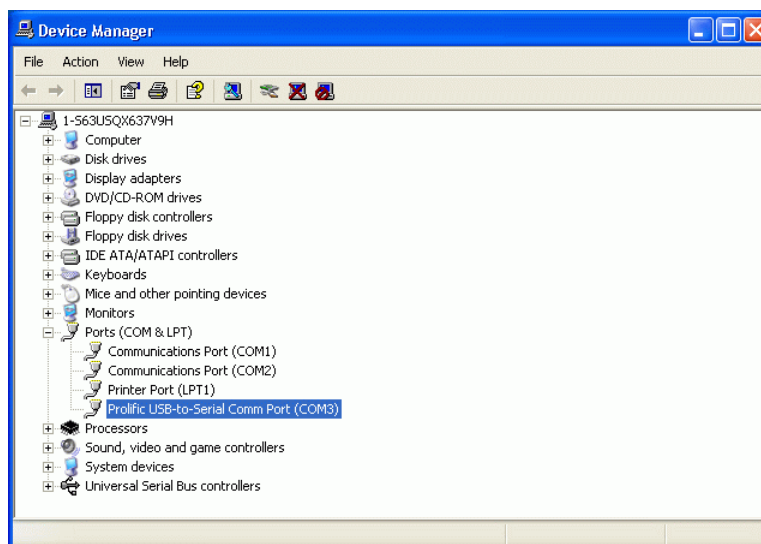
- 5.7.4 The windows will auto detect the device (**prolific USB-to-Serial Comm Port**) and install the driver into your system.



5.7.5 As the windows appear as below, click the “**Finish**” to continue.



5.7.6 After install the driver, you can see a new **Prolific USB-to-Serial Comm Port (COM3)** under the **Ports (COM&LPT)**.

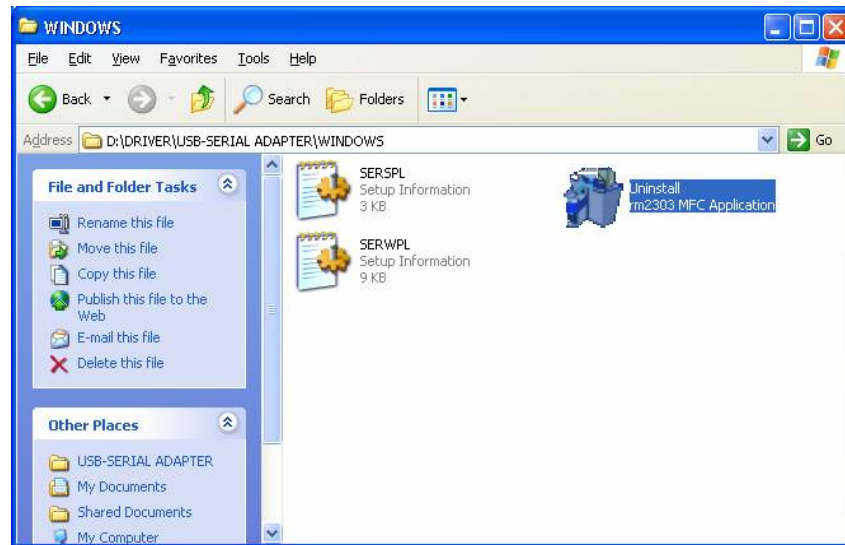


5.8 Windows® XP Driver Un-Installation

If you want to remove the USB-Serial adapter driver, you can uninstall it by following the steps below:

5.8.1 Unplug the USB-Serial adapter from your PC.

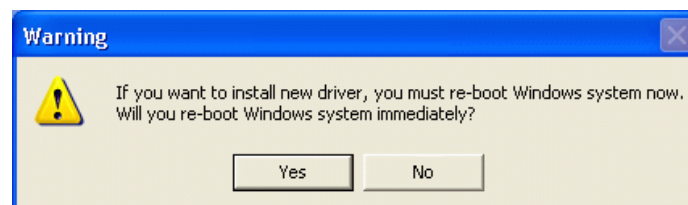
5.8.2 Run the **D:\DRIVER\USB-SERIAL ADAPTER\WINDOWS\Uninstall.exe** from the software CD-ROM, and then reboot the PC.



5.8.3 Click “**OK**” to remove the driver.



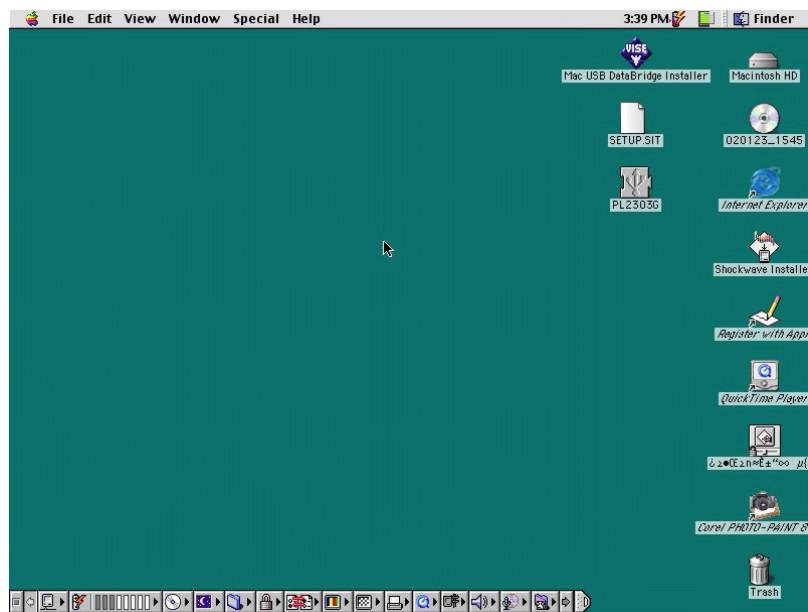
5.8.4 After remove the driver click “**YES**” to reboot your PC.



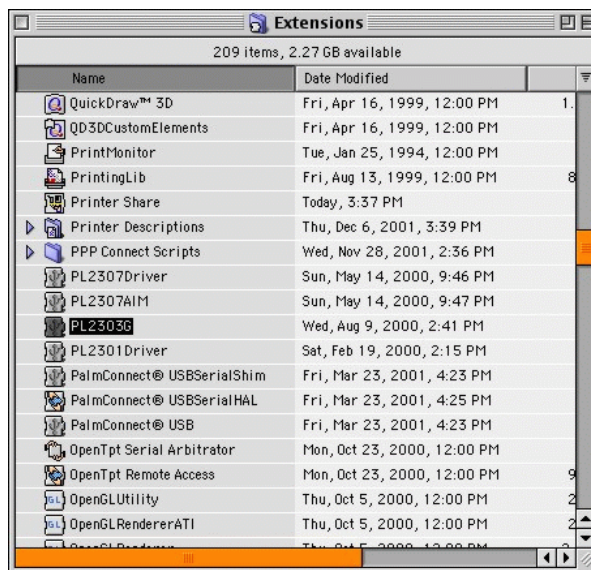
5.9 MAC OS 9 Driver Installation

Follow the steps below to install driver of USB-Serial adapter:

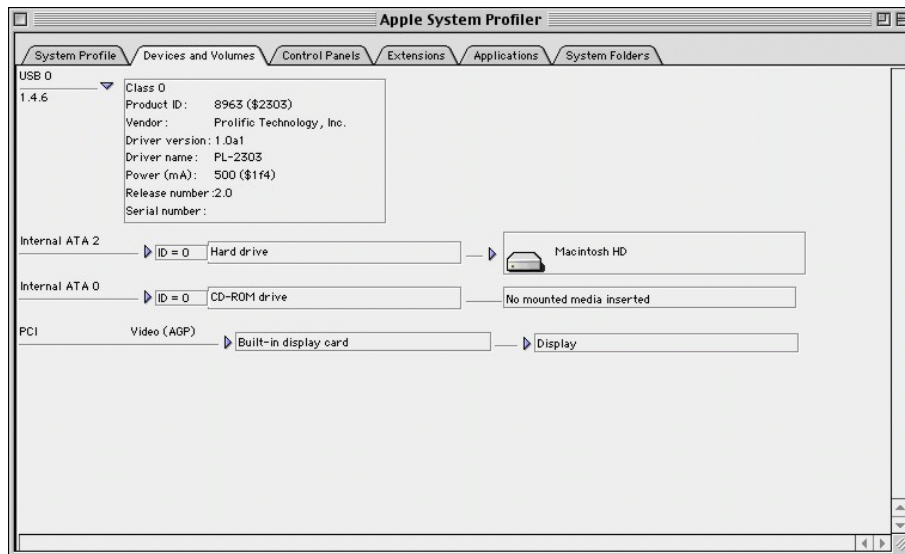
- 5.9.1 Power on your computer and make sure that the USB port is enabled and working properly.
- 5.9.2 Insert the USB-Serial adapter software driver into the CD-ROM drive and copy the “**D:\DRIVER\USB-SERIAL ADAPTER\MAC\Classic\SETUP.SIT**” to the desktop from the CD-ROM.
- 5.9.3 Run the SETUP.SIT from the desktop, it will auto run the program and create a **PL-2303G** on desktop.



- 5.9.4 Copy the “**PL-2303G**” to the “**System Folder**”-“**Extensions**”.



-
- 5.9.5 To make sure that your computer can use the device correctly, you have to check the “**Apple System Profiler**”-“**Device and Volumes**”. It will show the USB Device



5.10 MAC OS 9 Driver Un-Installation

If you want to remove the USB-Serial adapter driver, you can uninstall it by following the steps below:

- 5.10.1 Unplug the USB-Serial adapter from your MAC machine.
- 5.10.2 Remove the “**PL-2303G**” into the trash and then reboot your MAC machine.

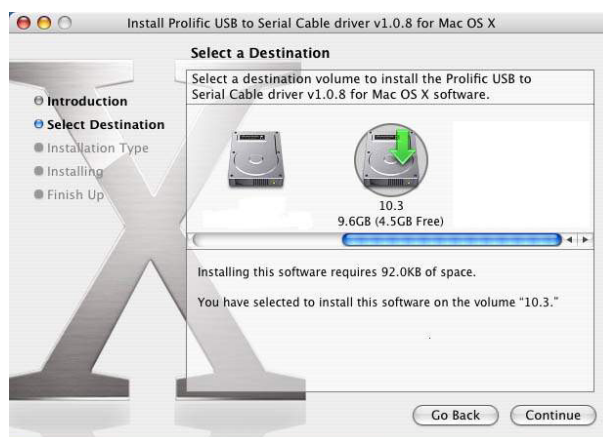
5.11 MAC OS X Driver Installation

- 5.11.1 Power on your computer and make sure that the USB port is enabled and working properly.
- 5.11.2 Insert the USB-Serial adapter software driver into the CD-ROM drive and copy the “**D:\DRIVER\USB-SERIAL ADAPTER\MAC\OS X\PL2303_1.0.8b4.pkg**” to the desktop from the CD-ROM.

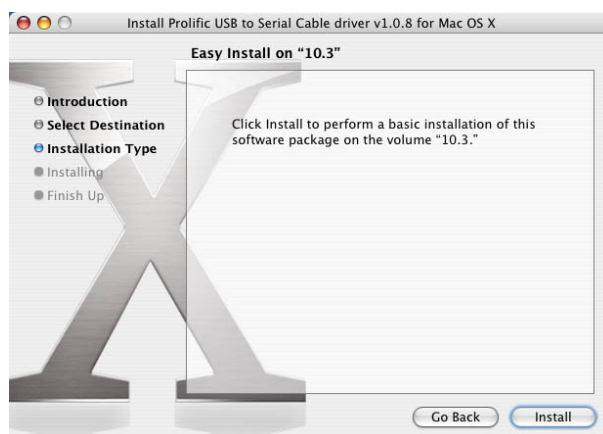
5.11.3 Run the **PL2303_1.0.8b4.pkg** from the desktop, and follow the screen to install the driver.



5.11.4 Select a destination that you want to install the driver, and then click **“Continue”**.



5.11.5 Click **“Install”** to continue.



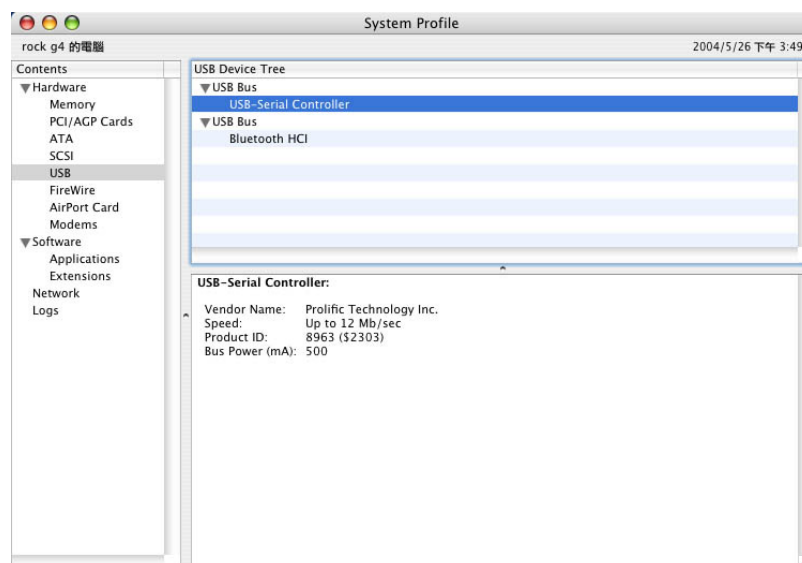
5.11.6 Click “Continue Installation”.



5.11.7 Click to Restart your system.



5.11.8 After restart your system, you can see a new **USB-Serial Controller** in the system Profiler.



6. Setting Up the RS232 Serial Device

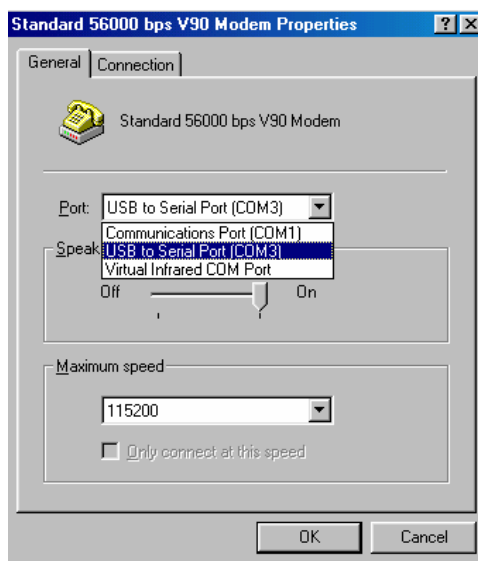
Follow the steps below to connect your RS232 Serial Device (i.e.: Modem) to the USB port of your PC:

6.1 Turn off your Modem. Plug the DB 9 connector of the USB-Serial adapter into your Modem. Connect the other end of the USB-Serial adapter to an USB type A to type B cable. Turn on the Modem afterwards.

6.2 Turn on your computer and plug in the USB connector of the USB-Serial adapter into the USB port.

6.3 If you have already installed a Modem device before, click Start, Settings, and Modems. Open Modems Properties, select the Modem, and click Properties. In General tab, please change the **Port** value to **USB to Serial Port (COM3)**.

6.4 After finishing these processes, you can use USB to Serial Bridge Cable to connect RS232 Serial 56K FAX Modem and execute the Dial-up function to connect Internet, and send the FAX with the FAX software (i.e.: Microsoft FAX) properly.



7. Trouble Shooting

If you can successful install the driver but cannot use the USB-Serial Adapter with connect the other device:

Go to the **Control Panel-System-Device Manager** and check the **COM (COM&LPT)**, if you cannot see this item:

7.1 Please check the **BIOS setting → I/O configure setting → Onboard serial port 1**, choose the setting is enabled and choose the value. Then return to the windows and check it again.

7.2 Go to the **Control Panel → Add New Hardware**, following the step and choose the hardware from the list, select the **Ports(COM&LPT)** and following the step to install the driver that is needed. (In this process you may need to put the **WINDOWS CD** into the **CD-ROM drive**.)

8. Disclaimer

Information in this document is subject to change without notice. The manufacturer does not make any representations or warranties (implied or otherwise) regarding the accuracy and completeness of this document and shall in no event be liable for any loss of profit or any other commercial damage, including but not limited to special, incidental, consequential, or other damages.

No part of this document may be reproduced or transmitted in any form by any means, electronic or mechanical, including photocopying, recording or information recording and retrieval systems without the express written permission of the manufacturer.

All brand names and product names used in this document are trademarks, or registered trademarks of their respective holders.

9. FCC Statement

This device generates and uses radio frequency and may cause interference to radio and television reception if not installed and used properly. This has been tested and found to comply with the limits of a Class B computing device in accordance with the specifications in Part 15 of FCC Rules. These specifications are designed to provide reasonable protection against such interference in a residential installation. However, there is no guarantee that interference will not occur in a particular installation. If this device does cause harmful interference to radio or television reception, which can be determined by plugging the device in and out, the user can try to correct the interference by one or more of the following measures:

- Reorient or relocate the receiving antenna.
- Increase the separation between the device and receiver.
- Connect the computer into an outlet on a circuit different from that to which the receiver is connected.
- Consult the dealer or an experienced radio/TV technician for help